



Brand Machinery System

BRAND FORMING MACHINERY CO.,LIMITED

Ventilation Frame Roll Forming Line



Structural Solutions



Roofing & Walling Solutions



House Framing Solutions



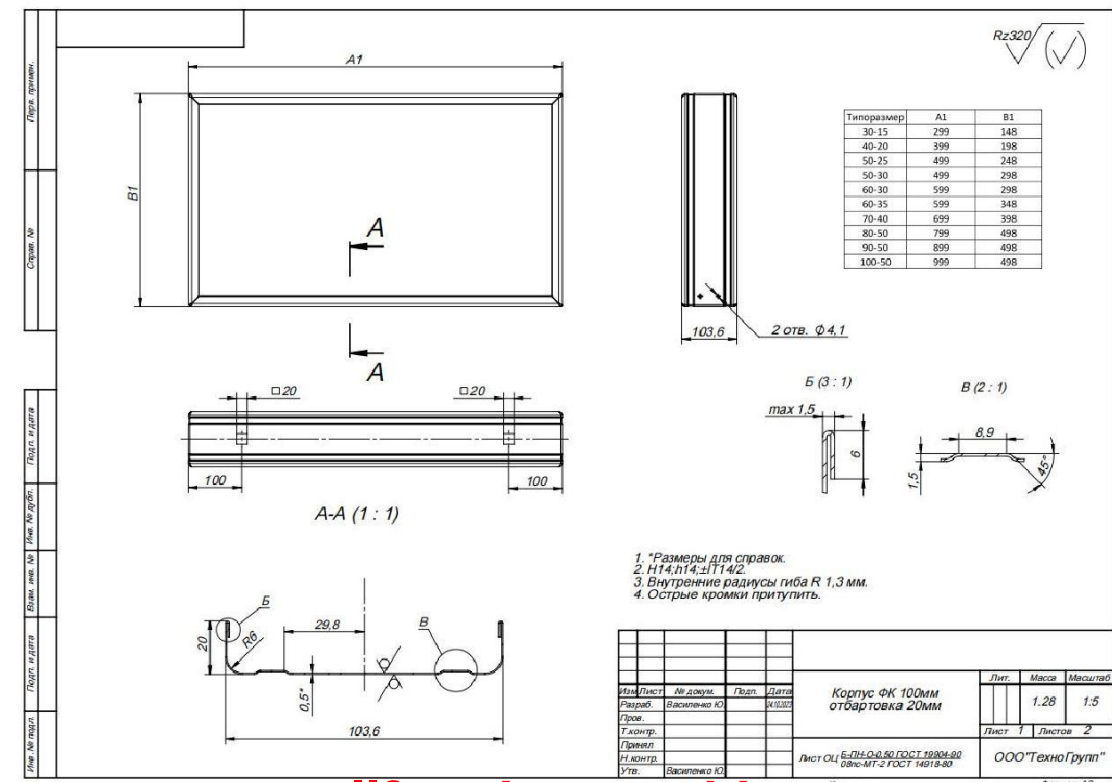
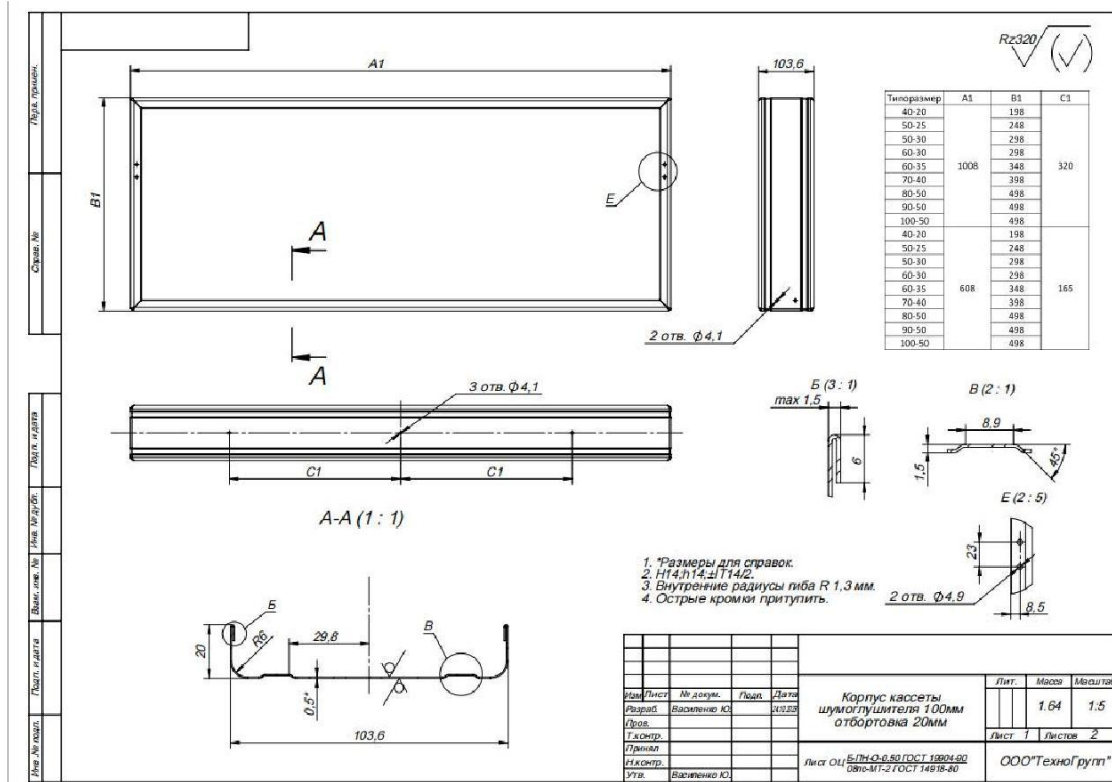
Customized Roll Forming

通风外框机 Ventilation Frame Roll Forming Line

VENTILATION FRAME ROLL FORMING MACHINE

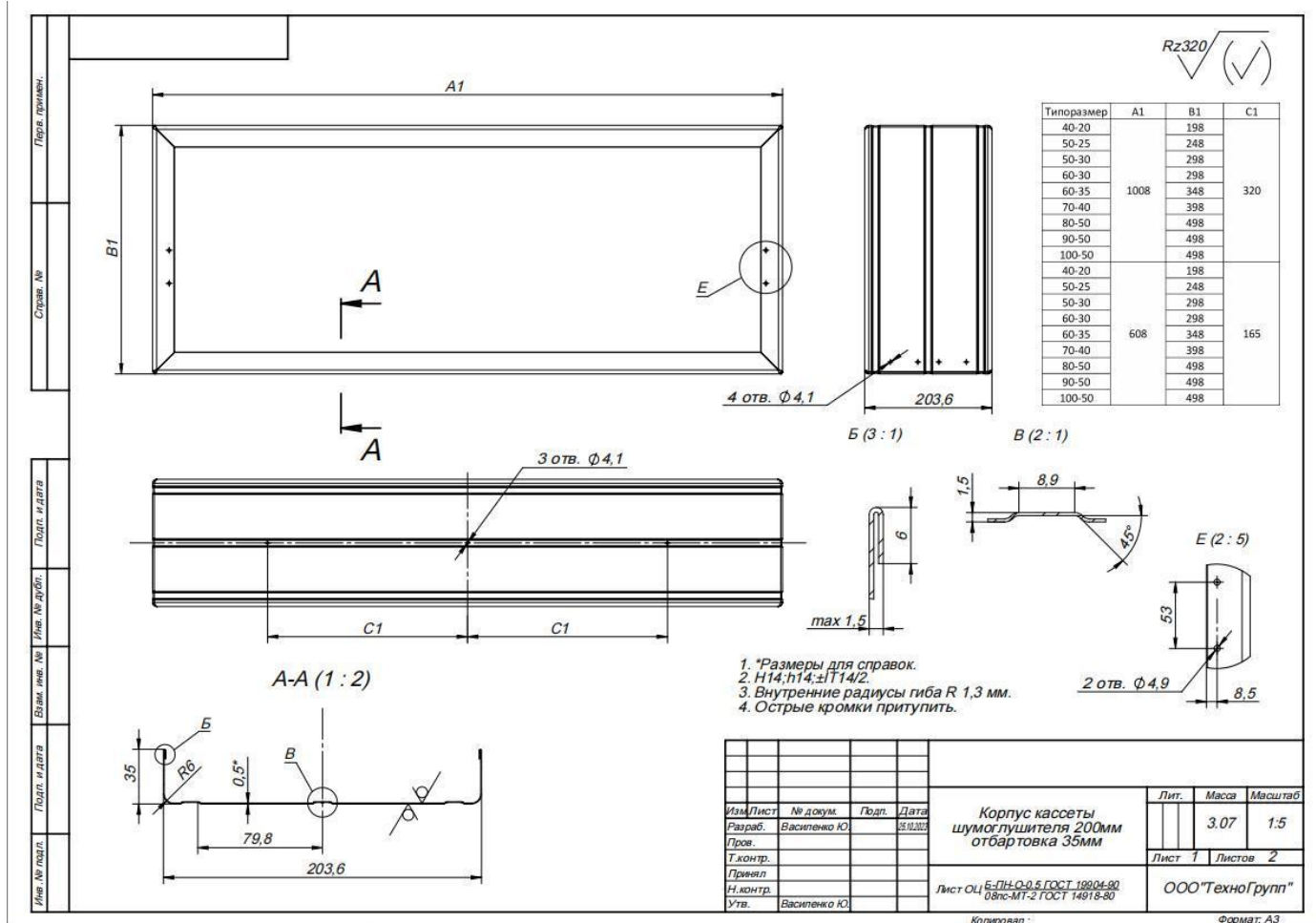
◎PROFILE(AUTO Change Size By Motor Drive,One Minute Finish)

YX20-103.6 Drawing



VENTILATION FRAME ROLL FORMING MACHINE

YX35-203.6 Drawing



©Material Information

Applicable Material: **Galvanized Steel**

Material Thickness: **0.5-0.7mm**

The Width Of Tolerance: **±0.5mm**

The Height Of Tolerance: **±0.5mm**

The Length Of Tolerance: **±1mm**

©Work Flow(Machine Space:18000*2500mm)

Manual Uncoiler → Feeding Guide Device → Leveling Device → Hydraulic Pre Punching Hole Device → Main Forming Mill → Straighter Device → Hydraulic AUTO Cutting & Bending Device → Exit Rack

BMS[®]

Brand Machinery System

BRAND FORMING MACHINERY CO.,LIMITED

Tel/Whatsapp:0086-13395014880

E-mail:sales03@rollformerschina.com

VENTILATION FRAME ROLL FORMING MACHINE

©Manual Uncoiler:**One Set**

Manual Control Steel Coil Inner Bore Shrinkage And Stop

Max. Feeding Width:**300mm**,Coil ID Range:**508+/-30mm**

Max Capacity:**2 T**



©Feeding Guide Device:**One Set**



VENTILATION FRAME ROLL FORMING MACHINE

©Leveling Device:One Set

Up **Three** Down **Four** Totally **Seven** Shafts Leveling Device

With Feeding Material Guide, Body Frame Made From H450 Type Steel By

Welding Side Wall Thickness: **Q235 t18mm**;Tie rod:φ22 Galvanized

Shafts Make From **45# Steel**,Diameter=φ90mm,High Frequency Heat Treatment



©Hydraulic Punching Device

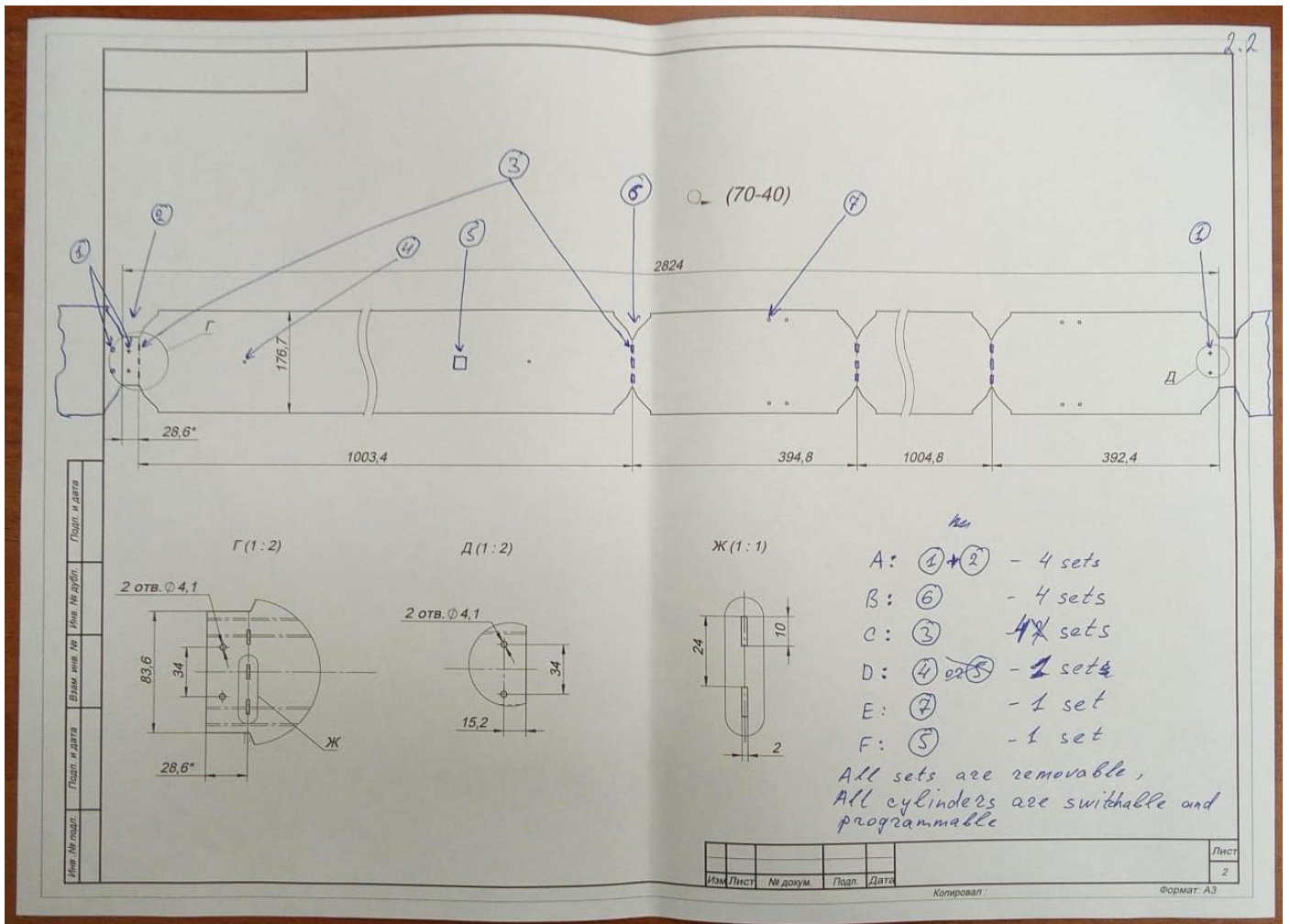
Pre-Punching & Post Cutting & Bending,Use The Same Hydraulic System

Hydraulic Motor:**7.5KW**,Hydraulic Pressure Range:**0-16Mpa**

Punching Tool Material:**Cr12MoV(=D2 Steel)**,Heat Treatment To **HRC58-**

62 6-Hydraulic Cylinders Punching System For Punching



VENTILATION FRAME ROLL FORMING MACHINE

A Cylinder: ①+② - Four sets of molds

B Cylinder: ⑥ - Four sets of molds

C Cylinder: ③ - Four sets of molds

D Cylinder: ④ - One set of mold

E Cylinder: ⑦ - One set of mold

F Cylinder: ⑤ - One set of mold

VENTILATION FRAME ROLL FORMING MACHINE

©Main Forming Mill

Body Frame Made From **H450** Type Steel By Welding

Archway Structure For More Stable

Profile Size Change By Motor Drive



Main **Servo Motor=7.5KW**, Frequency Speed Control

Speed Reducer Motor:**K Series**

Gear Box Driving,14-Steps To Form Profile



VENTILATION FRAME ROLL FORMING MACHINE

Real Forming Speed:20m/min

Rollers Make From **GCr15 Steel**,Heat Treatment,HRC 58-62

Degree Shafts Diameter=**φ65**,Quenching And Tempering

All The Screw Bolts With **Grade 8.8**

©Post Hydraulic AUTO Cutting & Bending Device:One Set

Post To Cut, Stop To Cutting,**Two Pieces** Type Of Cutting Blade

Design Hydraulic Motor:**7.5KW**;Cutting pressure: **0-16Mpa**

Cutting Tool Material:**Cr12MoV(= SKD11** With At Least One Million Times Of Cutting Life),**Heat Treatment** To HRC58-62 Degree

The Cutting Power Is Provided By The Main Engine Hydraulic Station



VENTILATION FRAME ROLL FORMING MACHINE

©PLC Control System:One Set

Control The Quantity And Cutting Length Automatically Input The Production Data(Production,Batch,Piece,Length,etc.)On The Touch Screen,It Can Finish The Production Automatically.Combined With: PLC, Inverter, Touch Screen, Encoder Switch Bottom, Indicate Light, Power Supply, Intermediate Relay, AC Contactor PLC:**Siemens(German Brand)**;

Inverter:**SHILIN(Taiwan Brand)**

7-Inch Color Touch Screen:**Siemens(German Brand)**

Encoder:**Omron (Japan Brand)**;Thermal Relay:**Schneider(France Brand)**

Air Switch:**LG-LS(Korea Brand)**;Cut-to-Length Tolerance $\leq\pm 1$ mm

Control Voltage **24V**

Chinese And English Language



VENTILATION FRAME ROLL FORMING MACHINE

©Exit Rack:3m Length One Set



©Tools And Spare Parts:One Set

Open Wrench 24x22, 22x19, 19x17,

17x14 A Hex Wrench (Size 1 to 10)

A Vise,A Cross And A Flat-Head Screwdriver, A Feeler,A Iron A Hammer, A Tape Measure

Spare Parts:

1.Drive Chain x 1

2.Drive Bearing x 2

3.Limited Switch x 1

BMS[®]

Brand Machinery System

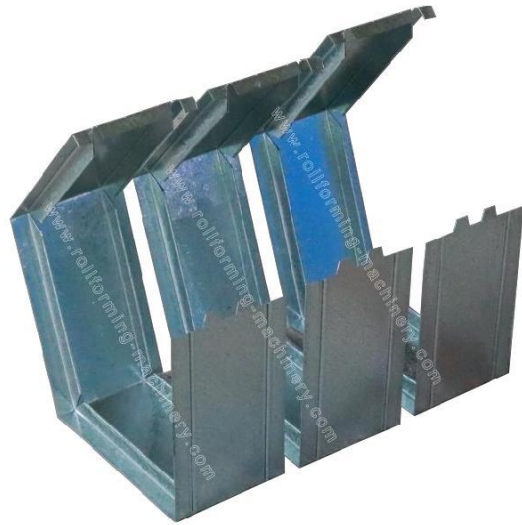
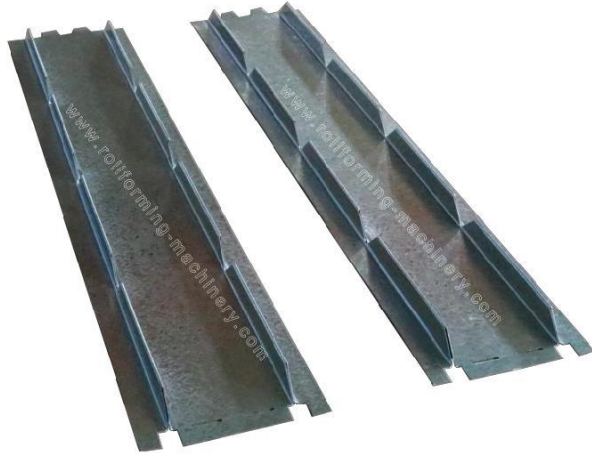
BRAND FORMING MACHINERY CO., LIMITED

Tel/Whatsapp:0086-13395014880

E-mail:sales03@rollformerschina.com

VENTILATION FRAME ROLL FORMING MACHINE

© Sample Show



BMS[®]

Brand Machinery System

BRAND FORMING MACHINERY CO., LIMITED

Tel/Whatsapp:0086-13395014880

E-mail:sales03@rollformerschina.com

VENTILATION FRAME ROLL FORMING MACHINE

©Machine Show



www.rollforming-machinery.com

VENTILATION FRAME ROLL FORMING MACHINE

©Price

NO.	Item Name	Quality	Delivery Time
1	Manual Uncoiler	1	75 Workdays
2	Feeding Guide Device	1	
3	Leveling Device	1	
4	Punching Hole device	1	
5	Punching Mold	15	
6	Roll Forming Mill	1	
7	Hydraulic Post AUTO Cutting & Bending Device	1	
8	Cutting Mold	4	
9	Hydraulic Station	1	
10	PLC Control System	1	
11	Exit Rack	1	
12	Tools And Spare Parts	1	

